

Parrot

SKYCONTROLLER



User Guide

Table of Contents

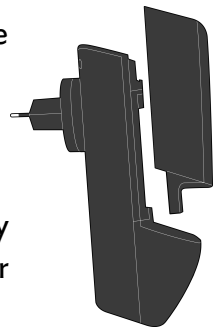
Before starting.....	4
Charging the battery.....	4
Installing the battery.....	4
Installing the neck strap.....	5
Installing a smartphone.....	5
Installing the sunshade cover.....	7
Connecting to the Parrot Bebop Drone.....	8
Displaying a video feedback.....	9
Piloting	10
Orienting the Parrot Skycontroller	13
Orienting the antenna.....	14
Movements.....	15
Photos and videos.....	15
Return home.....	16
Battery	16
Using FPV glasses.....	17
Wi-Fi	18
Updating.....	19
General information.....	20
Safety precautions and maintenance.....	20
Wi-Fi.....	20
Warning on invasion of privacy	20
Battery	21
Warranty.....	21
Modifications.....	22
Disposal of this product at the end of its life	22
Declaration of conformity.....	23
Registered trademarks	23

Before starting

Note: For easy reading, iPhone®, iPad® and other compatible telephones or tablets are referred to as 'smartphones' in the manual.

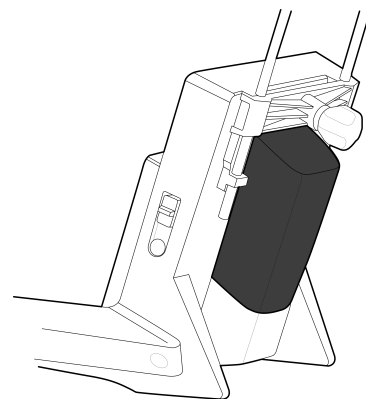
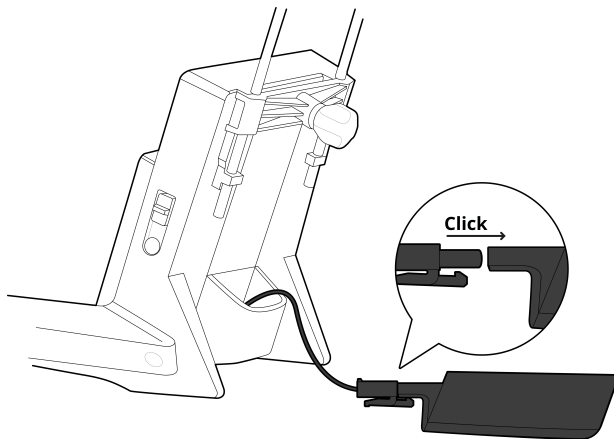
Charging the battery

1. Insert the plug converter corresponding to your country to the transformer.
2. Plug the battery to the charger.
3. Plug the charger to the mains.
 - > The charger's led lights up in red when charging. Once the battery is fully charged, the led turns green. The battery takes about 1 hour to charge.



Installing the battery

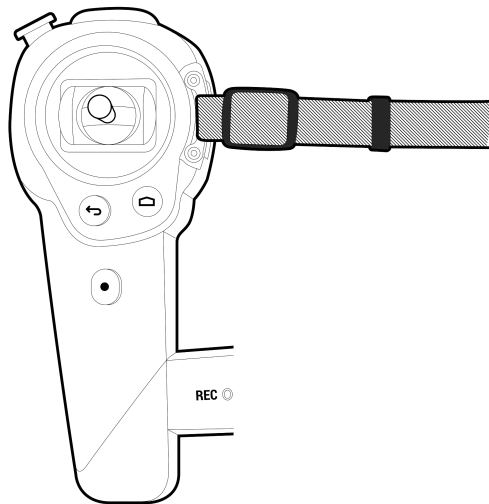
1. Connect the battery to the Parrot Skycontroller power cable.
2. Insert the battery into the battery compartment.



Installing the neck strap

Before the first use, attach the neck strap to the Parrot Skycontroller.

Before each use, ensure that the neck strap is correctly attached.

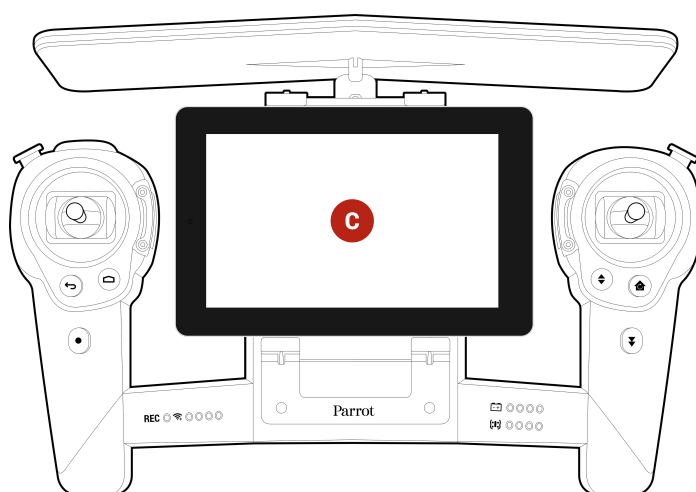
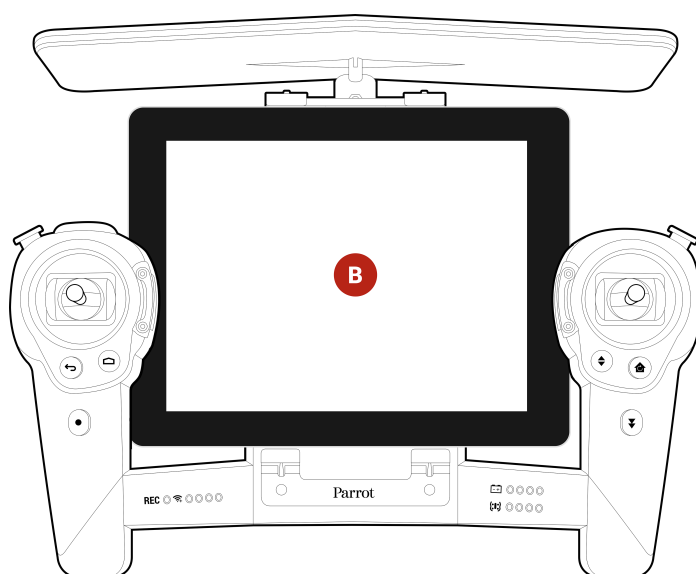
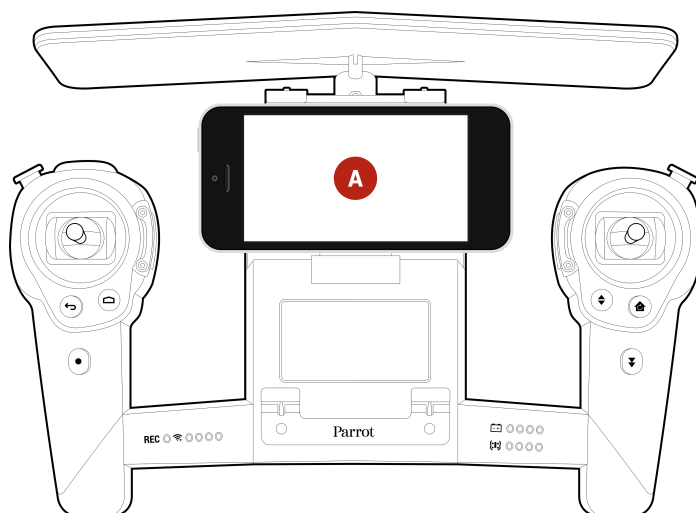


Installing a smartphone

The Parrot Skycontroller can be used with a smartphone or tablet in order to have a video feedback.

1. Place your device horizontally onto the appropriate support:
 - use the upper compartment for smartphones (A);
 - use the bottom compartment for tablets (B);
 - use the adapting support (supplied) for 7-inch tablets (C). Unscrew the removable part of the bottom compartment to install it.
3. Slide down the upper part of the support by pushing it slightly.
4. Screw the bottom handwheel located on the back of the Parrot Skycontroller to lock your device on the support.

Note: Ensure that the Parrot Skycontroller does not apply pressure on the buttons of your smartphone. If it does, move your smartphone towards right or left.

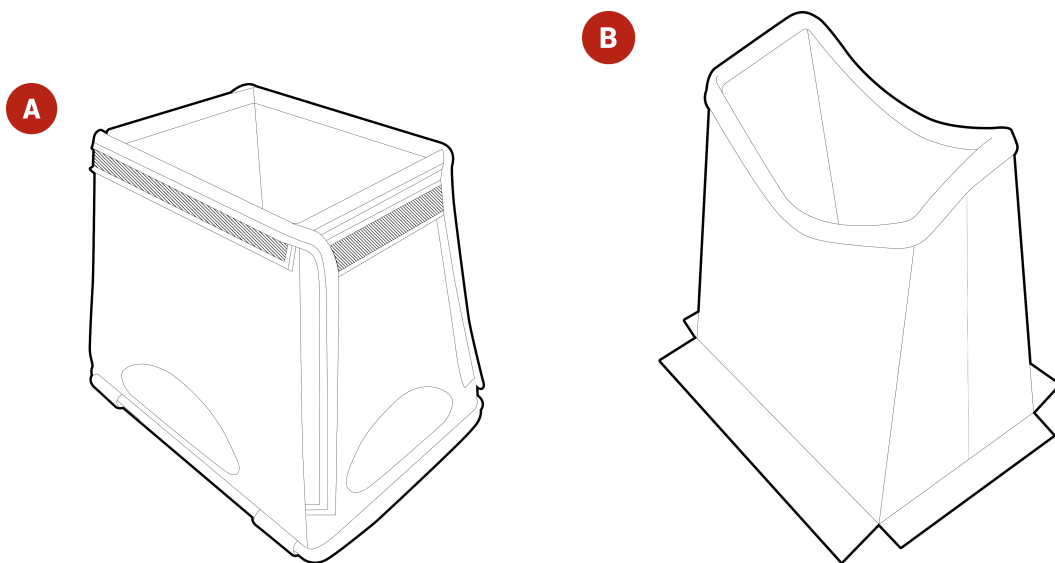


Installing the sunshade cover

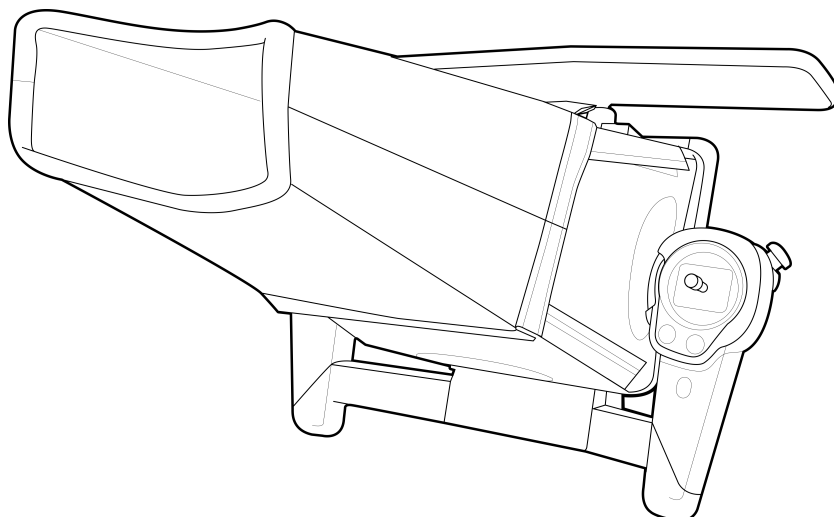
Install the foldable sunshade cover when you use the Parrot Skycontroller with a tablet in order to protect the screen from light reflection.

The sunshade cover is constituted of:

- a lower part (A);
- an upper part (B);
- a 7-inch tablet support.



1. Unfold the lower part of the sunshade cover.
2. Fix the support or your tablet into the lower part with the elastic bands. If you use a 7-inch tablet, insert it into the tablet support.
3. Fix your sunshade cover on the Parrot Skycontroller.
4. Unfold and assemble the upper part to the sunshade cover.



Note: You can use the foldable sunshade cover without the Parrot Skycontroller.

Connecting to the Parrot Bebop Drone

The Parrot Skycontroller automatically connects to the Parrot Bebop Drone it is sold with.

Switch the Parrot Bebop Drone and the Parrot Skycontroller on.


- > A signal tone indicates that the Parrot Bebop Drone is connected to the Parrot Skycontroller. The Parrot Bebop Drone battery leds and the Wi-Fi leds light up. The Parrot Bebop Drone is ready to be piloted with the Parrot Skycontroller.

If you have bought the Parrot Skycontroller and the Parrot Bebop Drone separately, connect them manually:

- from your smartphone via the FreeFlight 3 application;
- from a screen with HDMI port (including First Person View glasses).

Manual connection via smartphone

1. Switch the Parrot Skycontroller and the Parrot Bebop Drone on.
2. Search for available Wi-Fi® networks on your device:
 - If you are using an iPhone® or an iPad®, go to **Settings > Wi-Fi**
 - If you are using an Android™ smartphone, go to **Settings > Wireless and networks > Wi-Fi**.
3. Select the Skycontroller_XXXXX network. Wait for your smartphone to connect to the Parrot Skycontroller Wi-Fi network. The Wi-Fi symbol will usually appear on your smartphone when connection is complete.
4. Launch the FreeFlight 3 application, available for free on App StoreSM or Google PlayTM.
5. Press **Manager Wi-Fi**.
6. Select the Parrot Bebop Drone you want to connect.
 - > A pop-up asks you to connect your Parrot Bebop Drone.
7. Press **OK**.
 - > A signal tone indicates that the Parrot Bebop Drone is connected to the Parrot Skycontroller. The Parrot Bebop Drone battery leds and the Wi-Fi leds light up. The Parrot Bebop Drone is ready to be piloted with the Parrot Skycontroller.


Note: If the FreeFlight 3 main screen does not display the Parrot Bebop Drone video feedback, press , then, select the Parrot Bebop Drone.

Manual connection via screen with HDMI port

1. Switch the Parrot Skycontroller, the Parrot Bebop Drone and the screen (or First Person View glasses) on.
2. Plug the HDMI cable (or FPV glasses) on the HDMI port located on the left side of

the Parrot Skycontroller.

3. Press **Manager Wi-Fi**. For further information about the use of FPV glasses, see [Using FPV glasses](#).
4. Select your Parrot Bebop Drone.
 - > A pop-up asks you to connect your Parrot Bebop Drone.
5. Press **OK**.
 - > A signal tone indicates that the Parrot Bebop Drone is connected to the Parrot Skycontroller. The Parrot Bebop Drone battery leds and the Wi-Fi leds light up. The Parrot Bebop Drone is ready to be piloted with the Parrot Skycontroller.

Note: If the FreeFlight 3 main screen does not display the Parrot Bebop Drone video feedback, press , then select the Parrot Bebop Drone.

Displaying a video feedback

You can display the Parrot Bebop Drone video feedback on:

- your smartphone via the FreeFlight 3 application;
- FVP (First Person View) glasses via HDMI cable.

To display a video feedback on your smartphone:

1. Switch the Parrot Skycontroller and the Parrot Bebop Drone on.
2. Search for available Wi-Fi® networks on your device:
 - If you are using an iPhone® or an iPad®, go to **Settings > Wi-Fi**
 - If you are using an Android™ smartphone, go to **Settings > Wireless and networks > Wi-Fi**.
3. Select the Skycontroller_xxxxx network. Wait for your smartphone to connect to the Parrot Skycontroller Wi-Fi network. The Wi-Fi symbol will usually appear on your smartphone when connection is complete.
4. Launch the FreeFlight 3 application.
 - > The Parrot Bebop Drone connects to the Parrot Skycontroller automatically.

To display a video feedback on your FPV glasses:

Note: You can display a video feedback on any screen with a HDMI port.

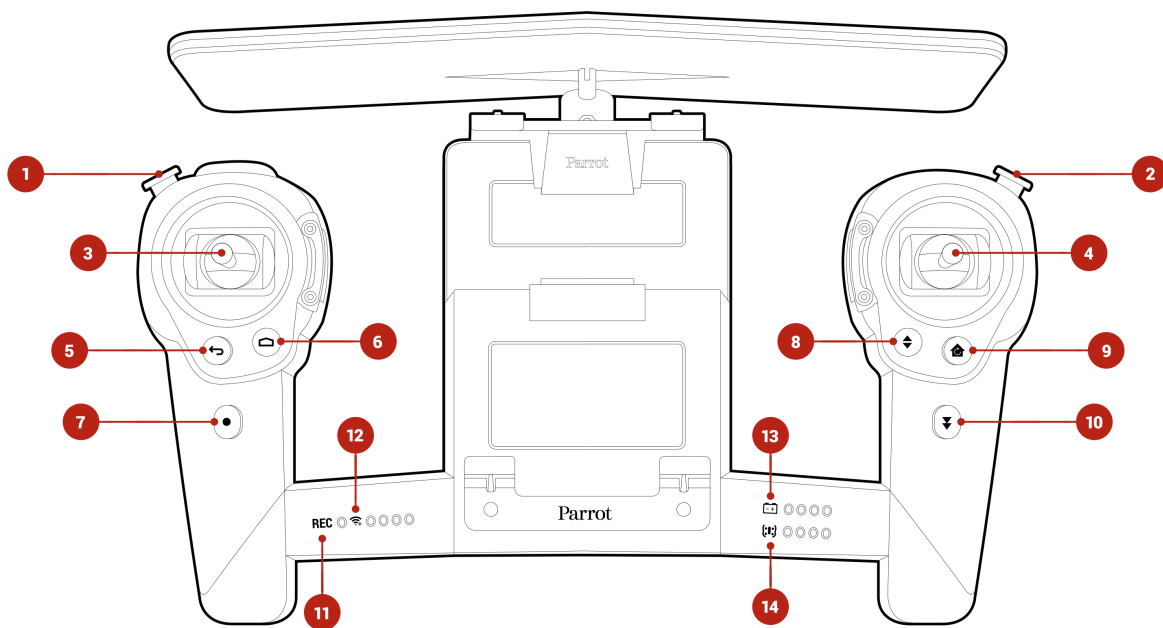
1. Plug the HDMI cable of your FPV glasses on the HDMI port located on the left side of the Parrot Skycontroller.
2. Switch the Parrot Skycontroller, the Parrot Bebop Drone, and the FVP glasses on.

Piloting

You can use the Parrot Skycontroller with or without video feedback.

The video feedback enables you to access the FreeFlight 3 application. You can then change the Parrot Bebop Drone piloting settings. For further information, see the [Parrot Bebop Drone user guide](#).

Note: It is not possible to perform flips if you use the Parrot Skycontroller without smartphone.

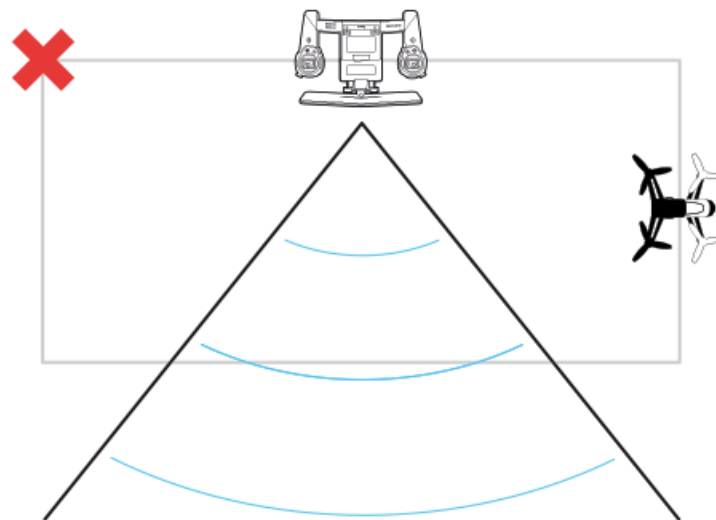
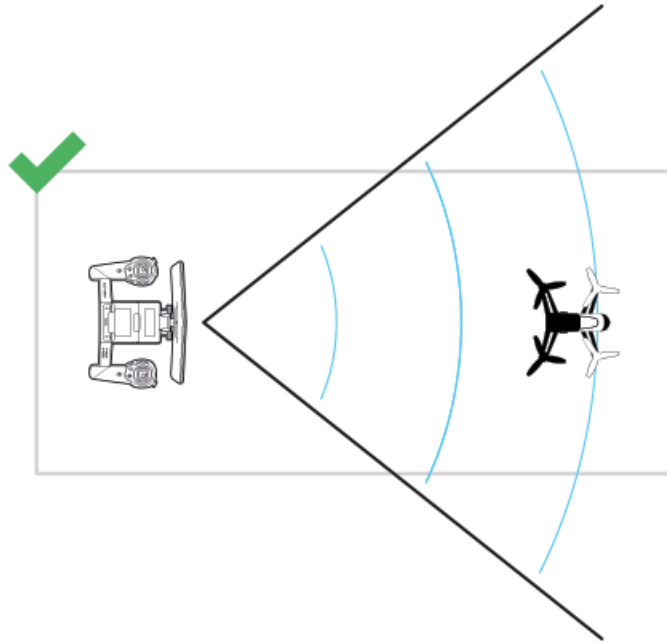


#	Description
1	Navigation in the Parrot Skycontroller application (with FPV glasses only)
2	Taking photos and orienting the angle of the camera
3	Left joystick
4	Right joystick
5	Previous screen of the Parrot Skycontroller application (with FPV glasses only)
6	Main screen of the Parrot Skycontroller application (with FPV glasses only)
7	Video record
8	Take off and landing
9	Return to starting point
10	Emergency landing
11	Video record signal
12	Wi-Fi signal
13	Parrot Skycontroller battery level

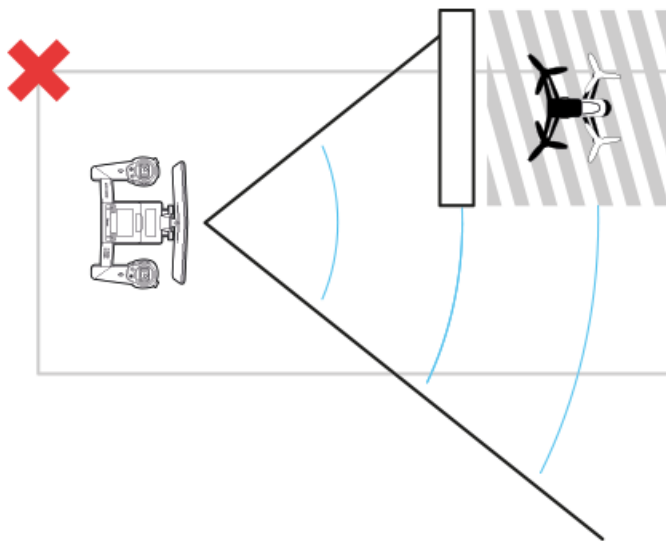
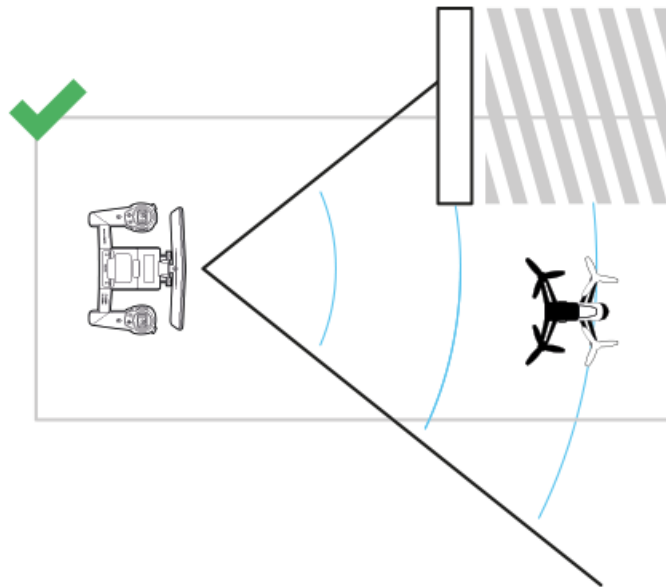
Orienting the Parrot Skycontroller

For better performances and to keep the Parrot Bebop Drone under control:

- always point the Parrot Skycontroller at the Parrot Skycontroller.



- always keep the Parrot Bebop Drone in your line of sight.



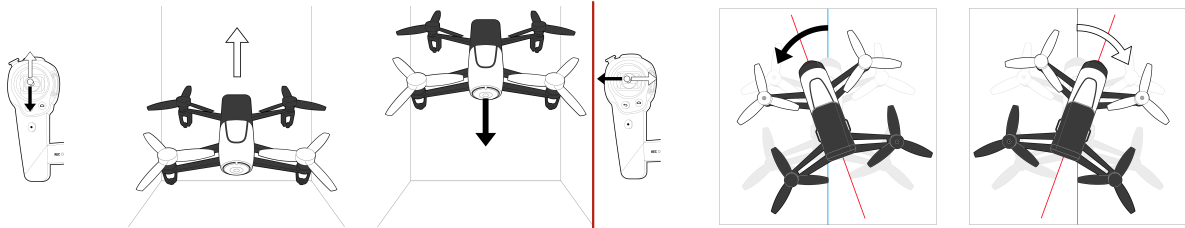
Orienting the antenna

Steer the antenna towards the Parrot Bebop Drone to improve the Wi-Fi signal reception.

To lock the antenna, turn the upper handwheel located at the back of the Parrot Skycontroller.

Movements

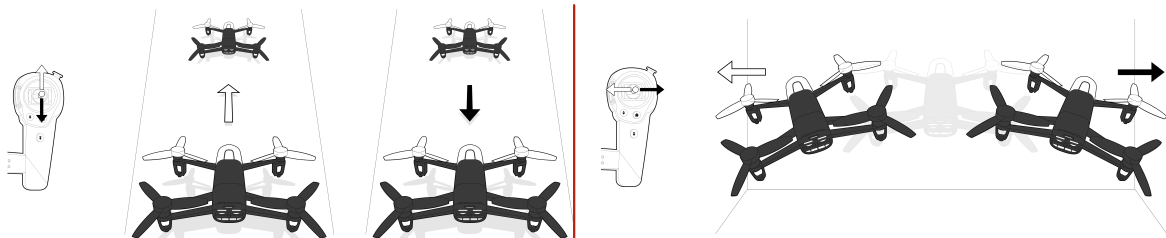
Left joystick



Fly upwards or downwards

Yawing (rotating towards left or right)


Right joystick




Pitching (moving onwards or backwards)

Rolling (turning towards left or right)

Photos and videos

Press the  button (2) to take a picture.

Press the  button (7) to record a video or to stop the video recording. When the REC led is red, the Parrot Bebop Drone is recording.

Note: The video mode is activated by default. In video mode, the recording starts automatically when the Parrot Bebop Drone takes off.

Use the joystick located (2) to change the angle of the camera.

To change the recording settings, see the [Parrot Bebop Drone user guide](#).

Note: The video recording stops after 25 minutes of recording.

Note: It is not possible to transfer video files to the Parrot Bebop Drone.

Return home

Press  (9) to make the Parrot Bebop Drone fly back towards:

- the last take off location,
- your smartphone location if the Parrot Skycontroller has received no GPS signal.





Note: If the Parrot Skycontroller altitude is below 10 m, it will reach an altitude of 10 m before returning to its starting point in order to avoid any obstacle.

Note: If the connection between your smartphone and the Parrot Skycontroller is lost, the Parrot Skycontroller returns to its starting point automatically after 1 min of disconnection.

Battery

The leds located at the bottom right of the Parrot Skycontroller indicate the battery level:

- of the Parrot Skycontroller for the leds located next to the  icon. The Parrot Skycontroller battery lasts 150 mn approximately.
- of the Parrot Bebop Drone for the leds located next to the  icon. The Parrot Bebop Drone battery lasts 11 mn approximately.


When the battery level of the Parrot Skycontroller or the Parrot Bebop Drone is low, the last led turns red. The Parrot Skycontroller makes a sound signal every 10 seconds.


Using FPV glasses

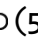
First Person View glasses enable you to:

- fly the Parrot Bebop Drone with Head Tracking feature;
- access the FreeFlight 3 application.

To navigate in the FreeFlight 3 application with FPV glasses:

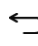
Use the joystick  (1) to navigate in the menu.

Press  (1) to click.

Press  (5) to return to the previous screen.

Press  (6) to open the main screen.

To access Android™ operating system from FPV glasses:

1. Go to the FreeFlight 3 main screen.
2. Press .
 - > A pop-up asks you if you want to exit the application.
3. Press **OK**.
 - > You can navigate through the Android™ operating system. Press the FreeFlight 3 icon to launch the application again.

Wi-Fi

Note: Before flying the Parrot Bebop Drone, please ensure that you comply with the Wi-Fi frequencies restrictions of your place of flight. Certain frequencies may be restricted or forbidden. For example, in certain countries using the 5 GHz Wi-Fi band may be prohibited in outdoor mode.

You can connect the Parrot Skycontroller to the 2.4 GHz or 5 GHz Wi-Fi bands.

- The 2.4 GHz Wi-Fi band enables you to fly the Parrot Skycontroller from a greater distance. It is generally more congested than the 5 GHz Wi-Fi band in urban areas.
- The 5 GHz Wi-Fi band enables you to obtain a better connection between the Parrot Skycontroller and the Parrot Bebop Drone.

To switch the Wi-Fi band (2.4 GHz or 5 GHz), hold down the the REC (7) and Emergency landing (8) buttons for 5 seconds .

When the Wi-Fi signal is low, the Parrot Skycontroller makes a tone signal every 10 seconds.

Updating

Update the Parrot Skycontroller via USB, by downloading the update file from our website. A computer and an USB flashdrive are necessary .

For further information, see the Parrot Skycontroller [update procedures](#).

General information

The Parrot Skycontroller is aimed to remotely fly the Parrot Bebop Drone and is not suitable for use by children under 14 years of age.

REMINDER: The Parrot Bebop Drone is a model aircraft designed only for entertainment, and competitions between model aircraft. Fly responsibly. Do not fly your Parrot Bebop Drone over any populated area, such as beaches, others people's backyards, heavily populated parks, or sports ovals where a game is in progress, over gathering of animals. Do not fly near an airfield. Do not fly for money. If you want to fly your Parrot Bebop Drone in any populated area or near an air field, do contact your local aerial authority to get the appropriate authorization.

Do not use spare parts and accessories other than those specified by Parrot.

Safety precautions and maintenance

The Parrot Skycontroller may be irreversibly damaged if you allow sand or dust to penetrate it.

Do not use the Parrot Skycontroller in wet conditions.

Do not leave the Parrot Skycontroller in direct sunlight for long periods.

Small parts may be swallowed. All materials for fastening or packing purposes are not part of the product and should be discarded for children's safety.

This equipment is restricted to indoor operation in 5.15 - 5.25GHz.

Wi-Fi

Before flying the Parrot Skycontroller, please ensure that you comply with the Wi-Fi frequencies restrictions of your place of flight. Certain frequencies may be restricted or forbidden. For example, in certain countries using the 5 GHz Wi-Fi band may be prohibited in outdoor mode.

Warning on invasion of privacy

Recording and circulating an image of an individual may constitute an infringement of their image and privacy for which you could be liable. Ask for authorisation before filming individuals, particularly if you want to keep your recordings and/or circulate

images on the Internet or any other medium. Do not circulate a degrading image or one which could undermine the reputation or dignity of an individual. The use of the Parrot Skycontroller for surveillance or espionage is strictly forbidden and could result in your prosecution under the law. Check that your use of the cameras on board the Parrot Skycontroller complies with the legal provisions on the protection of privacy.

Battery

Read the entire instruction sheet included with this battery. Failure to follow all instructions could cause permanent damage to the battery and its surroundings, and cause bodily harm. Never use anything except a LiPo approved charger. Always use a LiPo cell balancing charger or a LiPo cell balancer. Never charge through the discharge lead. Never trickle charge, or allow to discharge below 2.5V per cell. Never allow the battery temperature to exceed 140°F (60°C). Never disassemble or modify pack wiring in any way or puncture cells. Never place on combustible materials or leave unattended during charge. Always charge in a fireproof location. Always set charger's output volts to match battery volts. Always keep out of reach of children. Improper battery use may result in a fire, explosion or other hazard.

The battery terminals should not be allowed to short-circuit. The product should be connected only to class II appliances which display the symbol.

Warranty

Without prejudice to any applicable statutory warranty, Parrot warrants that the Parrot Skycontroller will be free from defects in material and workmanship for a period of 12-months from the initial date of purchase (excluding consumables which are warranted during 6 months from the initial date of purchase) upon presentation of proof of purchase to the retailer or to Parrot (including the date and place of purchase, product serial number). Return to retailer is not applicable in the USA - return shall be made to Parrot. During the contractual warranty period, any defective product should be returned in its original packaging to the retailer's or Parrot's after-sales service. After inspection of the product, Parrot will, at its sole discretion, either repair or replace the defective part or product, excluding any other indemnification of any nature. Parrot's warranty does not cover: defects due to damage caused by an accidental collision or fall; defects due to abnormal use of the product or if spare parts have been installed without following the recommendations and instructions provided by Parrot in this guide or on www.parrot.com or if the Parrot Skycontroller has been customised by the end-user; defects caused by repairs carried out by the end-user or an unauthorised third party, except spare parts provided by PARROT; defects due to the use of spare parts not provided by PARROT in the original packaging. the use of spare parts not

approved by Parrot, in particular, the use of batteries not approved by Parrot ; defects caused by any reason other than a defect in material or workmanship the gradual power loss of the Parrot rechargeable battery (o86x) over time, which does not constitute as a defect in material or workmanship, If upon technical tests being carried out any product is found non defective we reserve the right to return such product to the sender at the sender's cost and to levy a charge to cover Parrot's technical test fees. Upon expiration of the 12-month warranty period or if the defect is not covered by the warranty, any defective product can be returned to Parrot's after-sales service in order to be repaired or for a defective part to be replaced at the sender's costs. Repair will be carried out only after acceptance of the corresponding quotation. Except in relation to consumables, spare parts are subject to a 12 month warranty and are subject to the same terms and conditions as those described above. The warranty does not cover: damage to non Parrot products, including devices used to operate the Parrot Skycontroller.

Modifications

The explanations and specifications in this guide are given for information purposes only and may be modified without prior notice. They are deemed to be correct at time of going to press. The utmost care has been taken when writing this guide, as part of the aim to provide you with accurate information. However, Parrot shall not be held responsible for any consequences arising from any errors or omissions in the guide, nor for any damage or accidental loss of data resulting directly or indirectly from the use of the information herein. Parrot reserves the right to amend or improve the product design or user guide without any restrictions and without any obligation to notify users. As part of our ongoing concern to upgrade and improve our products, the product that you have purchased may differ slightly from the model described in this guide. If so, a later version of this guide might be available in electronic format at Parrot's website at www.parrot.com.

Disposal of this product at the end of its life

At the end of this product's life, please do not dispose of this product in your general household waste. Instead, in order to prevent possible harm to the environment or human health from uncontrolled waste disposal, please dispose of this product separately in accordance with your local laws and regulation. For more information on the separate collection systems for waste electrical and electronic equipment that are available for consumers, near your home, free of charge, please contact your local municipality authority. You can also contact the retailer from which you purchased your Parrot Skycontroller – he might have put in place recycling services or he may be

part of a specific recycling scheme.

Declaration of conformity

Parrot SA, 174 quai de Jemmapes, 75010 Paris, France, declare under their sole responsibility that the product described in this user guide complies with technical standards EN 301489-17, EN300328, EN71-1, EN71-2, EN71-3, EN62115 following the provision of the Radio Equipment, Telecommunication Equipment directive (1999/5/EC R&TTE), and of the General Safety directive (2001/95/EC).

<http://www.parrot.com/ce/?bebop-drone>

Registered trademarks

Parrot, Parrot Skycontroller are trademarks or registered trademarks of Parrot SA.

App Store is a trademark of Apple Inc.

Google Play is a trademark of Google Inc. Wi-Fi® is a registered trademark of Wi-Fi Alliance®.

All other trademarks mentioned in this guide are protected and are the property of their respective owners.